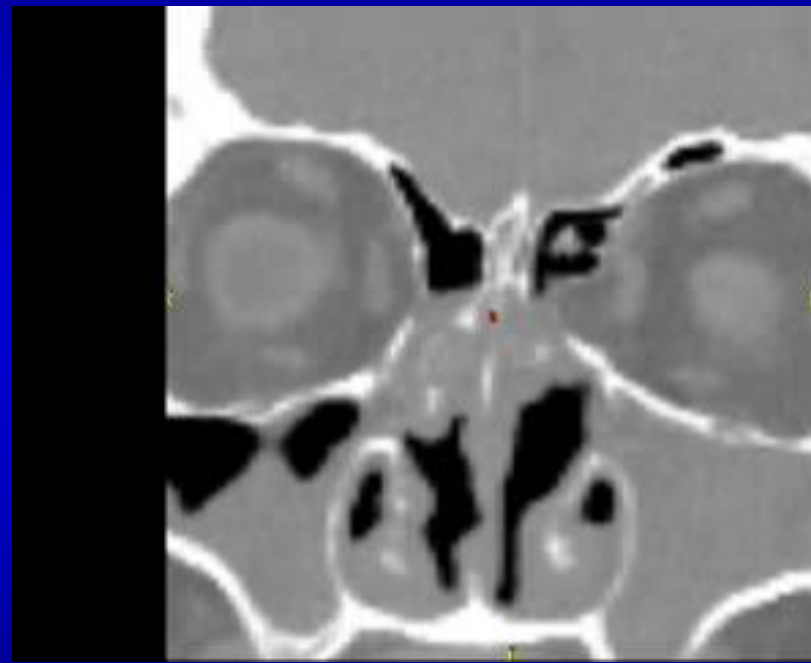
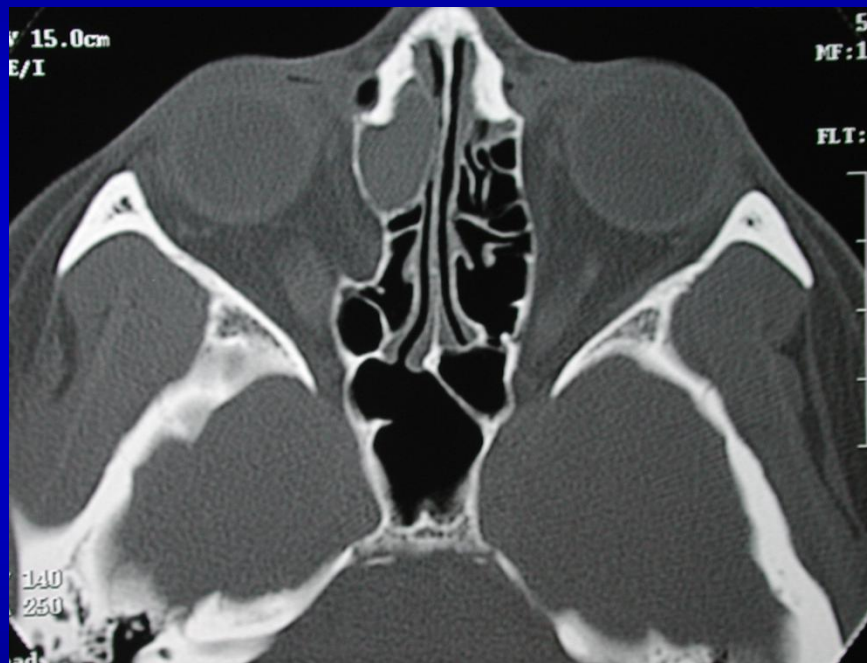


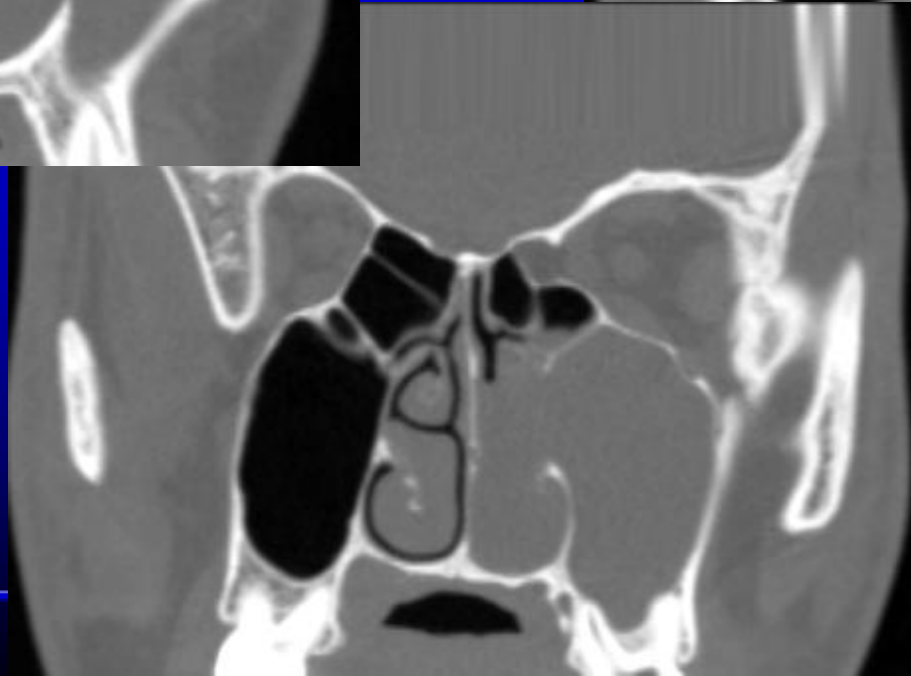


Orbital Dehiscence Preoperative Assessment

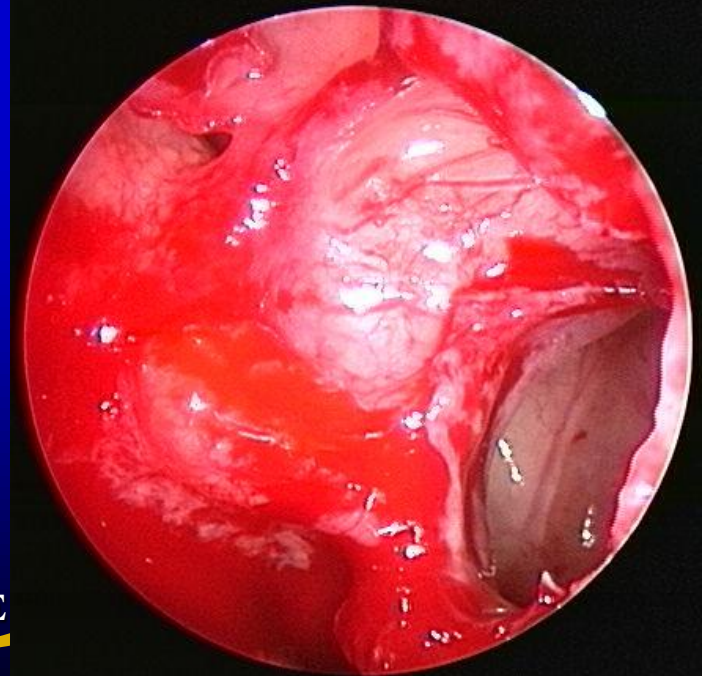
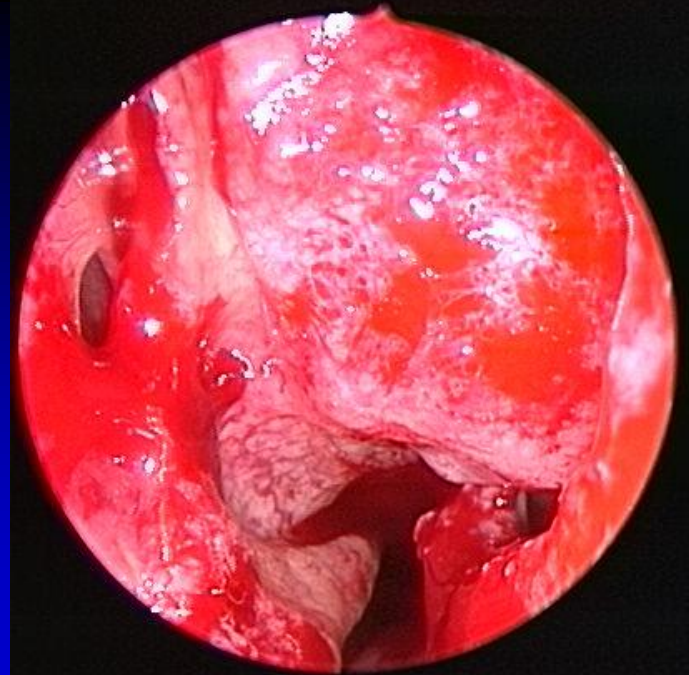


Orbital Dehiscence

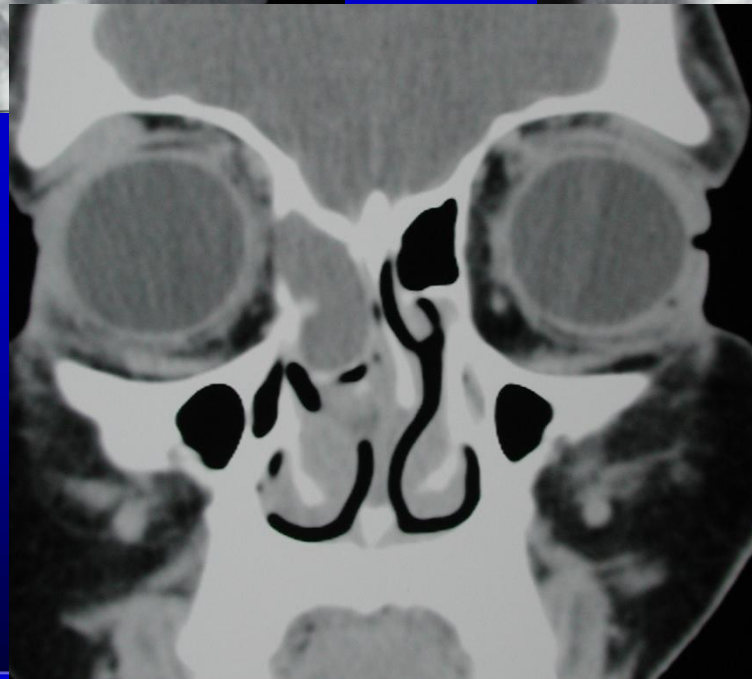
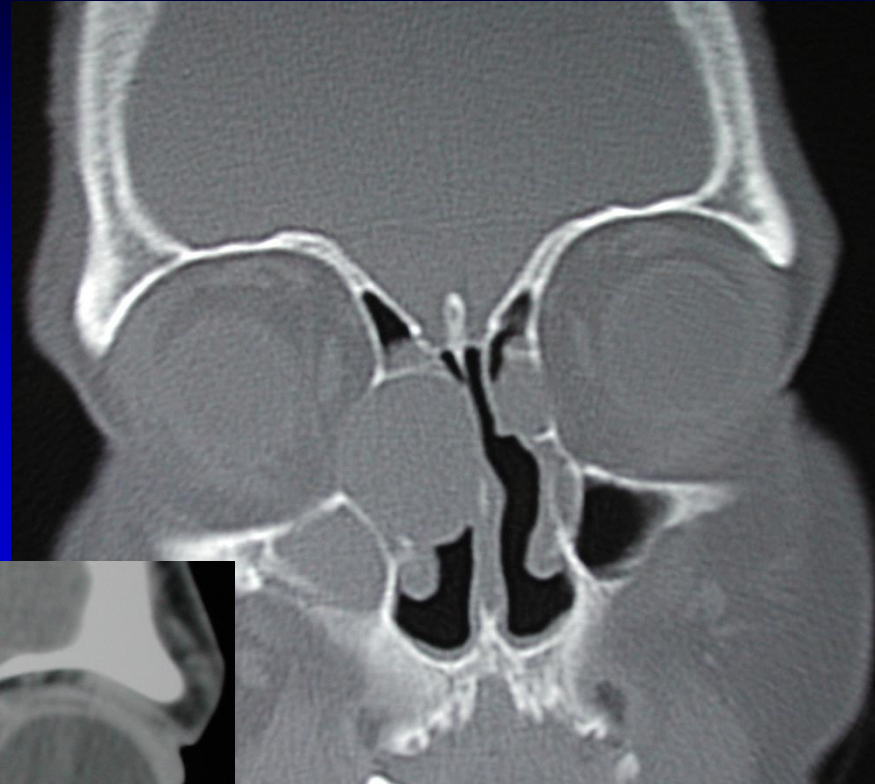
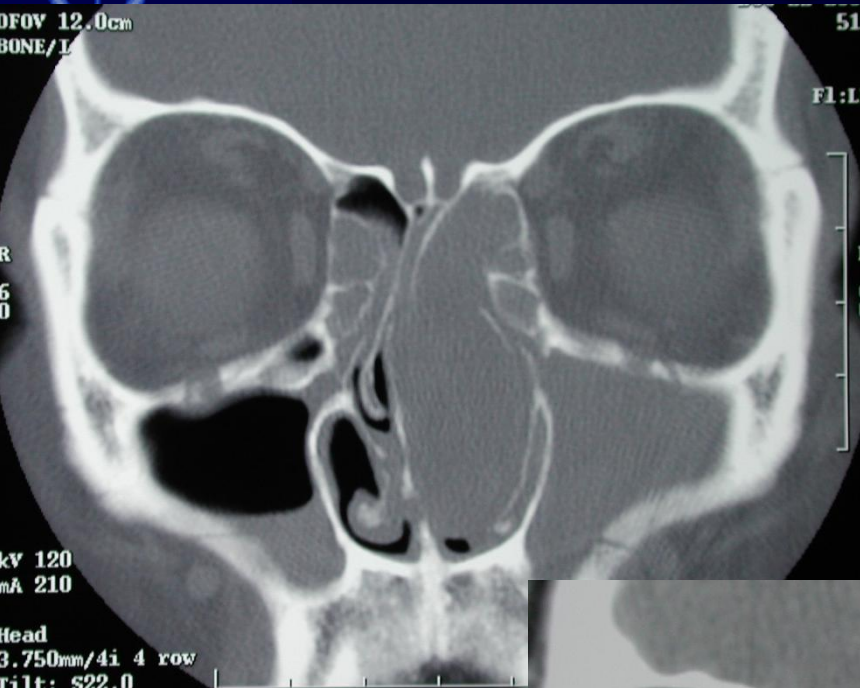
Preoperative Assessment



Infraorbital Ethmoid Cell



Mucoceles



Concha bullosa

uncinate process

Agger nasi cell

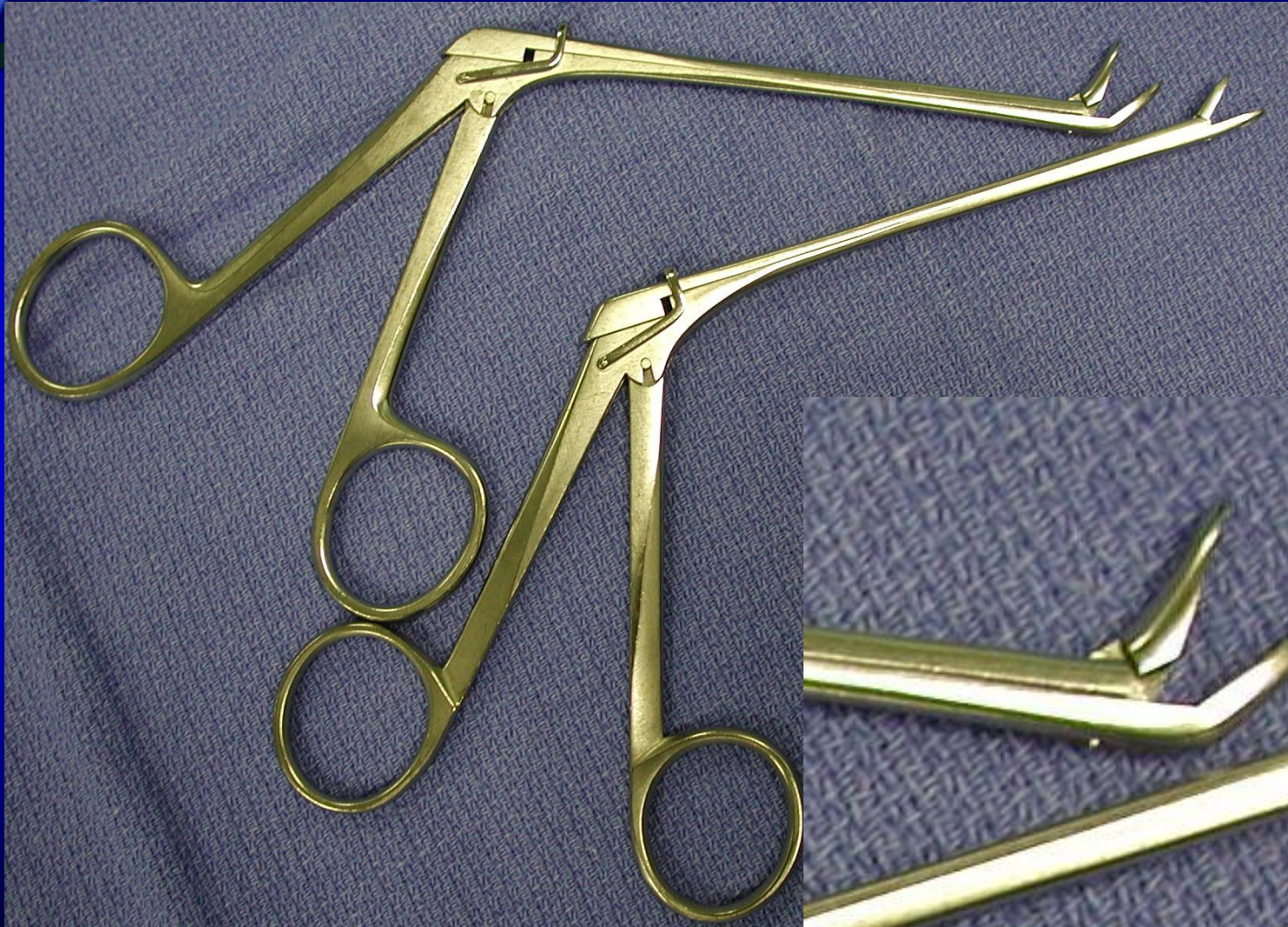


Basic Principles

- Physiologic procedure
 - ✓ Maintain normal anatomic structures
 - ❖ As much as allowed by underlying disease
- Relieve obstruction
 - ✓ Restore normal drainage/aeration
- **Mucosa sparing**
- **Minimize mucosal trauma**
- Maintain turbinate support
- Remove bone chips

The Past

Non-Cutting Instruments

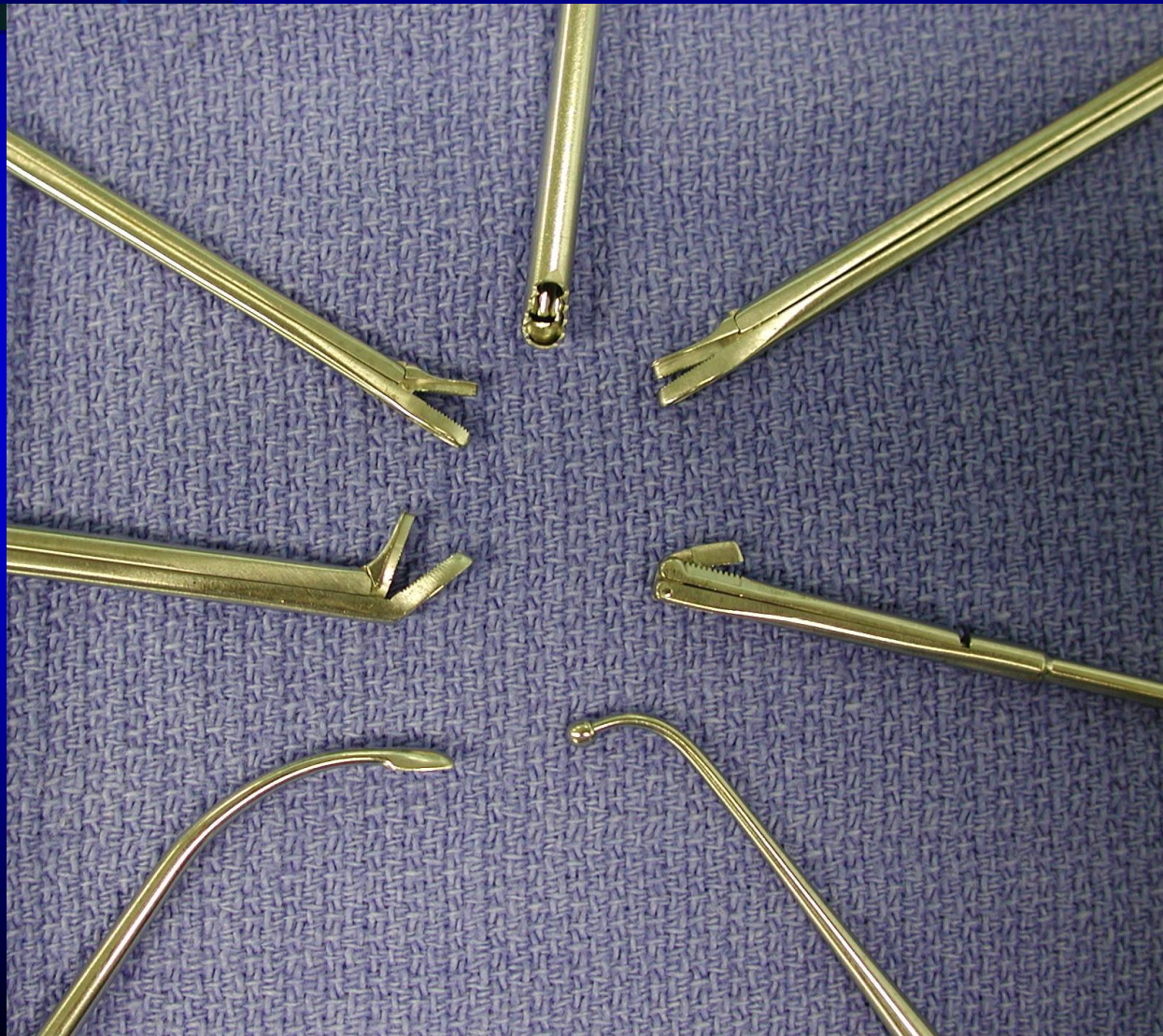


Do not
allow for
precise
tissue
removal



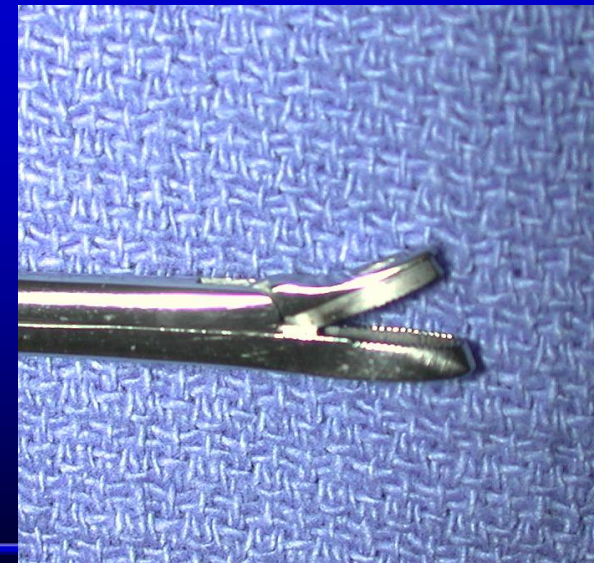


The Present Cutting Instruments



Allows for more
precise tissue
removal

Use pediatric size





Appropriate Instrumentation



Kuhn Frontal Sinus Set



Procedure

- Obtain access
- Uncinectomy- complete
- Maxillary antrostomy
- Open or remove bulla
- Posterior ethmoidectomy
- Sphenoidotomy
- Agger nasi removal and frontal recess dissection



Concha Bullosa

